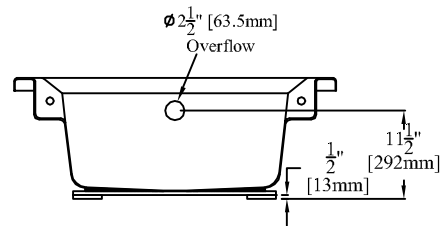
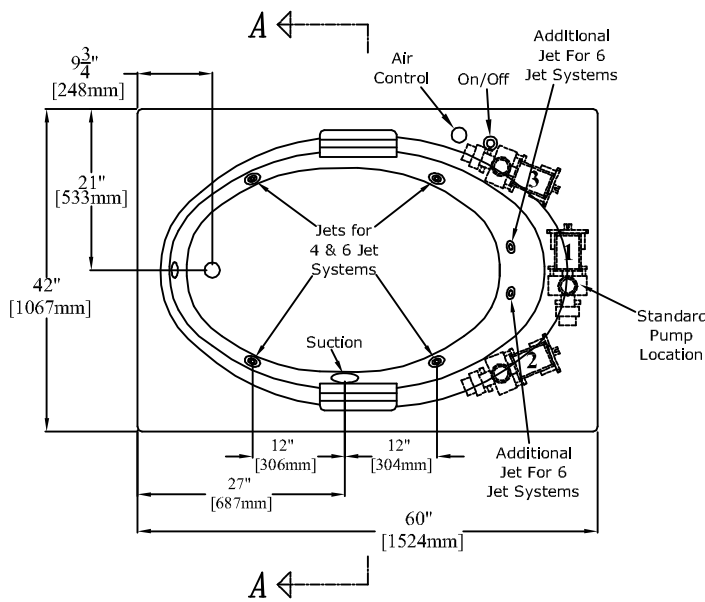


ELEVATION



SECTION "A-A"

*** For clarity, ***
the whirlpool piping
has been omitted
from this drawing



PLAN

60" [1524mm] Drop-in Bathtub
With 4 or 6 Jet Whirlpool Package

PRODUCT SPECIFICATIONS:

- * Product complies with NAHB, CSA, HUD UM-73A and ANSI-Z124.1.
- * When installing this whirlpool, an access area should be provided near the location of the whirlpool pump for future access. An access area is required by many local, state & federal building codes.
- * Recommended access area dimensions: W-20" [508mm] H-15" [381mm]
- * Wood reinforced & slip resistant floor.
- * Integral rolled edge for drop-in installation
- * Factory drilled 2 1/2" [64mm] overflow.
- * Bathwell Dimensions (At Top): W-49" [1245mm] D-30" [762mm] H-13" [330mm]
- * Bathwell Dimensions (At Bottom): W-40 3/4" [1035mm] D-26 3/4" [679mm]
- * Bathwell Capacity (At Overflow): 38 Gallons [144L]
- * Water Level (At Overflow): 9" [229mm]
- * This unit is available without an overflow (Model 4250TM:4 or 4250TM:6).
- * Pump locations labeled 2 & 3 are alternate pump locations that are available.
- * All dimensions +/- 1/4" [6.4mm]
- * Clarion Bathware reserves the right to change design and/or dimensions.

Model RE4250T:4 or RE4250T:6

60" [1522mm] Drop-in Bathtub with 4 or 6 Jet Whirlpool Package

Clarion
BATHWARE
44 Amsler Ave.
Shippensville, PA 16254

Phone: (814) 226-5374
Toll Free: (800) 576-9228
Fax: (814) 226-0730
www.clarionbathware.com

Signatures For Approval:

Customer: _____
Arch./Engr: _____
Contractor: _____
Cla. Engr: _____

Date:

Dwg. Name:
4250T
-4&6JETCUT
Dwg. By: DJC
DATE: 4/1/10