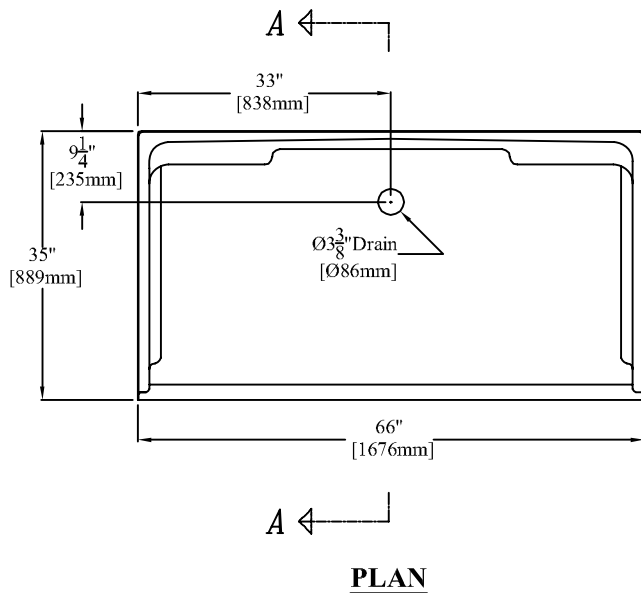
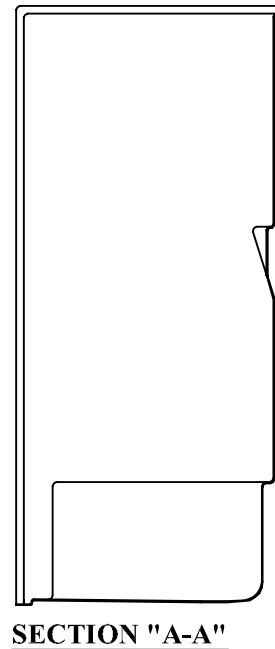
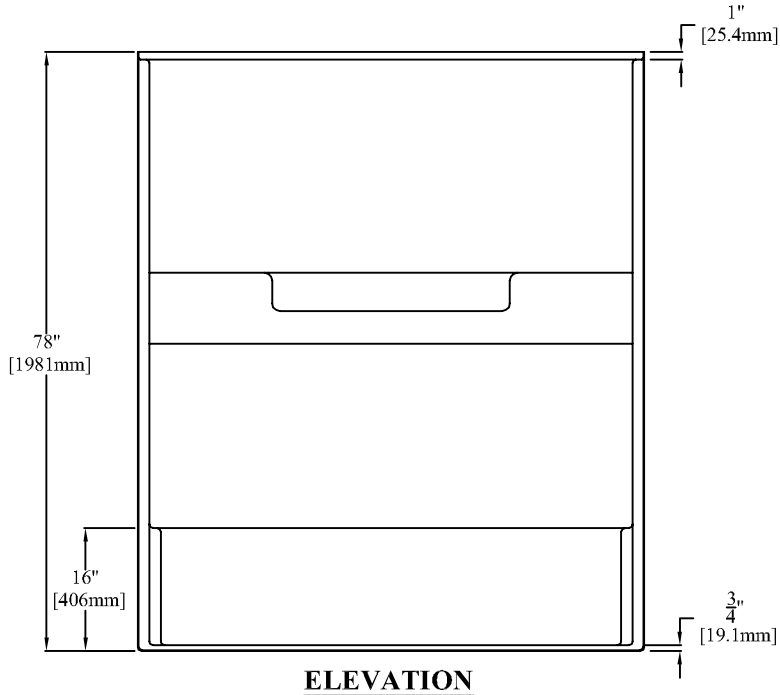


Clarion Bathware



PRODUCT SPECIFICATIONS:

- * Special installation instructions for this product must be followed carefully.
- * Product complies with NAHB, HUD UM-73A, ANSI-Z124.2, ADAAG and ANSI -A117.1.
- * Accepts Clarion Bathware Model 6635TX34 tub insert so that this unit can be converted into a tub/shower.
- * Wood reinforced & slip resistant floor.
- * Integral 1" [25mm] nailing flange.
- * Product does not accept a shower door.
- * All dimensions +/- 1/4" [6.4mm]
- * Clarion Bathware reserves the right to change design and/or dimensions.
- * Dimensions are the same for RE, RS, MP, CU and all other versions of this model.

*66" [1676mm] Convertible Barrier-free Shower Stall
With 3/4" [19mm] Threshold*

Model 6635BFSD34

66" [1676mm] Convertible Shower with 3/4" [19mm] Threshold

Clarion
BATHWARE
44 Amsler Ave.
Shippenville, PA 16254

Phone: (814) 226-5374
Toll Free: (800) 576-9228
Fax: (814) 226-0730
www.clarionbathware.com

Signatures For Approval:

Customer: _____
Arch./Engr: _____
Contractor: _____
Cla. Engr: _____

Date:

Dwg. Name:
6635BFSD34
-CUT

Dwg. By: DJC
DATE: 10/22/07