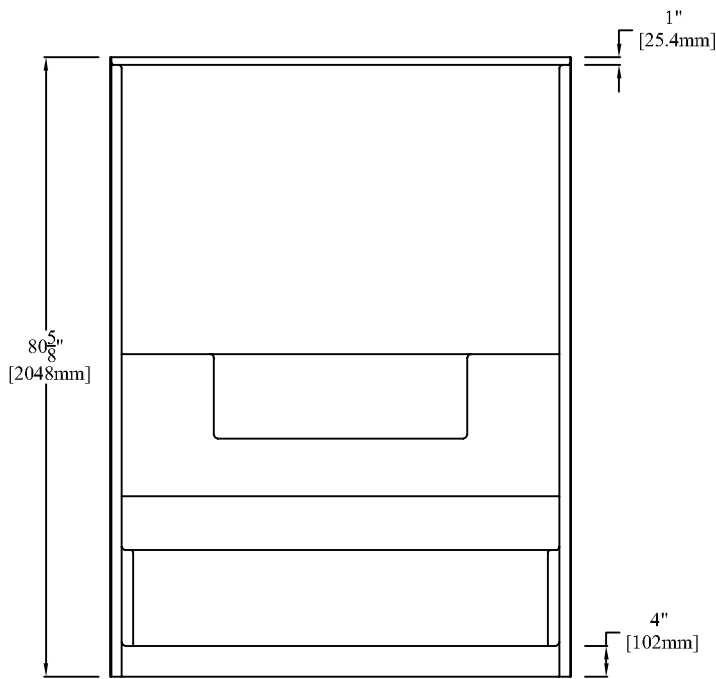
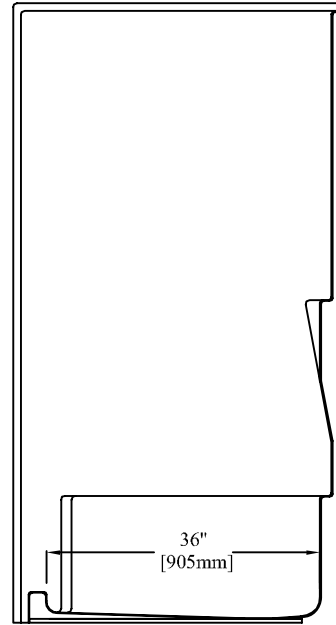


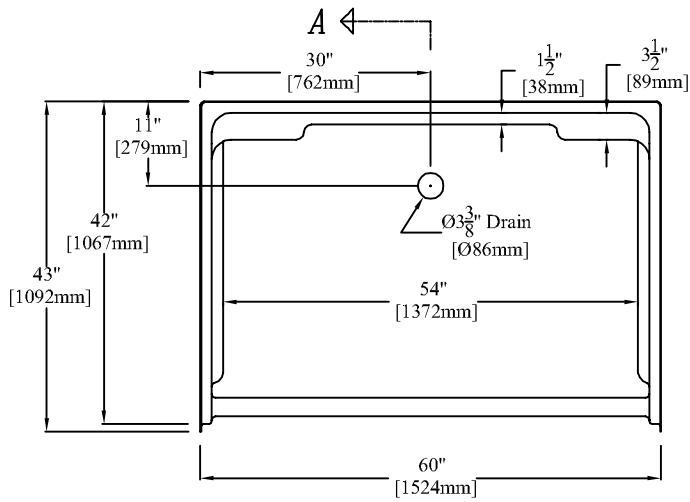
Clarion Bathware



ELEVATION



SECTION "A-A"



PLAN

60" [1524mm] Convertible Shower

PRODUCT SPECIFICATIONS:

- * Product complies with NAHB, HUD UM-73A, and ANSI-Z124.2.
- * Accepts Clarion Bathware Model 6043T tub insert so that this unit can be converted into a tub/shower.
- * If you wish to retain the ability to convert this shower to a tub/shower at a later date, you should not install a shower door.
- * Door Opening: W-57" [1448mm]
H-75" [1905mm]
- * Wood reinforced & slip resistant floor.
- * Integral 1" [25mm] nailing flange.
- * All dimensions +/- 1/4" [6.4mm]
- * Clarion Bathware reserves the right to change design and/or dimensions.
- * Dimensions are the same for RE, RS, MP, CU and all other versions of this model.

Model 6043SD

60" [1524mm] Convertible Shower

Clarion
BATHWARE
44 Amsler Ave.
Shippenville, PA 16254

Phone: (814) 226-5374
Toll Free: (800) 576-9228
Fax: (814) 226-0730
www.clarionbathware.com

Signatures For Approval:

Customer: _____
Arch./Engr: _____
Contractor: _____
Cla. Engr: _____

Date: _____

Dwg. Name:
6043SD
-CUT

Dwg. By: DJC
DATE: 10/22/07