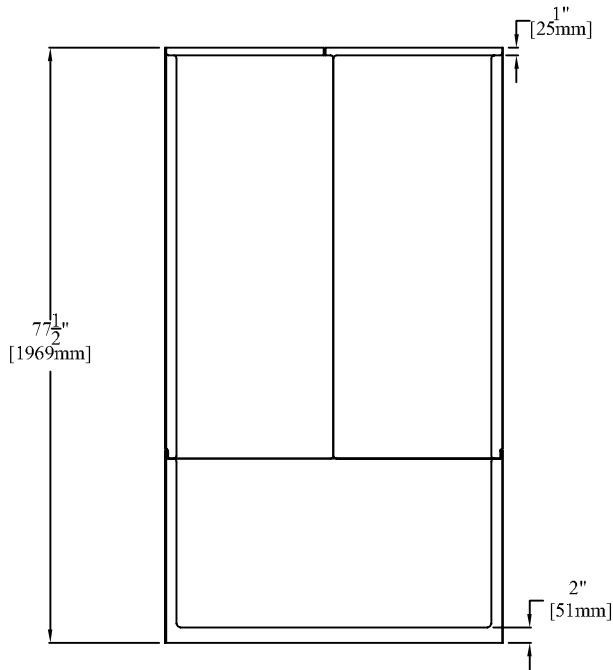
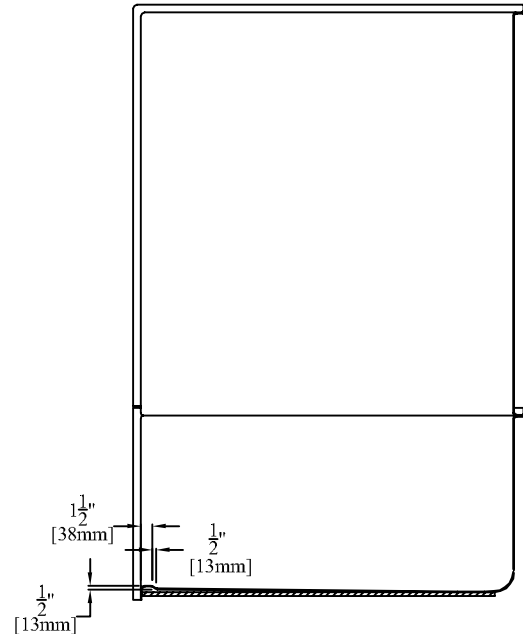


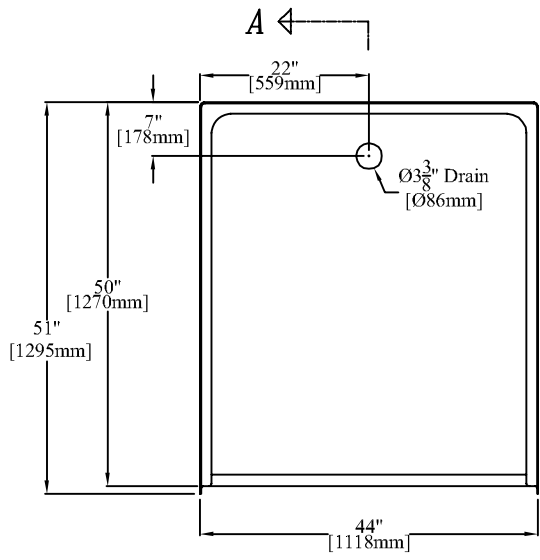
# Clarion Bathware



**ELEVATION**



**SECTION "A-A"**



A ←

**PLAN**

44" [1118mm] 3-Piece Barrier-free Shower Stall  
With 2" [51mm] Threshold

**PRODUCT SPECIFICATIONS:**

- \* SPECIAL INSTALLATION INSTRUCTIONS FOR THIS UNIT MUST BE FOLLOWED CAREFULLY.
- \* Product complies with NAHB, HUD UM-73A, and ANSI-Z124.2.
- \* Reinforced & slip resistant floor.
- \* Integral 1" [25mm] nailing flange.
- \* Door Opening: W-40 3/4" [1035mm]  
H-74 1/4" [1886mm]
- \* All dimensions +/- 1/4" [6.4mm]
- \* Clarion Bathware reserves the right to change design and/or dimensions.
- \* Dimensions are the same for RE, RS, MP, CU and all other versions of this model.

**Model 4450BFKD**

**44" [1118mm] 3-Piece Barrier-free Shower Stall With 2" [51mm] Threshold**

**Clarion**  
BATHWARE  
44 Amsler Ave.  
Shipperville, PA 16254

Phone: (814) 226-5374  
Toll Free: (800) 576-9228  
Fax: (814) 226-0730  
www.clarionbathware.com

Signatures For Approval:

Customer: \_\_\_\_\_  
Arch./Engr: \_\_\_\_\_  
Contractor: \_\_\_\_\_  
Cla. Engr: \_\_\_\_\_

Date: \_\_\_\_\_

Dwg. Name:  
4450BFKD  
-CUT

Dwg. By: DJC  
DATE: 11/15/07