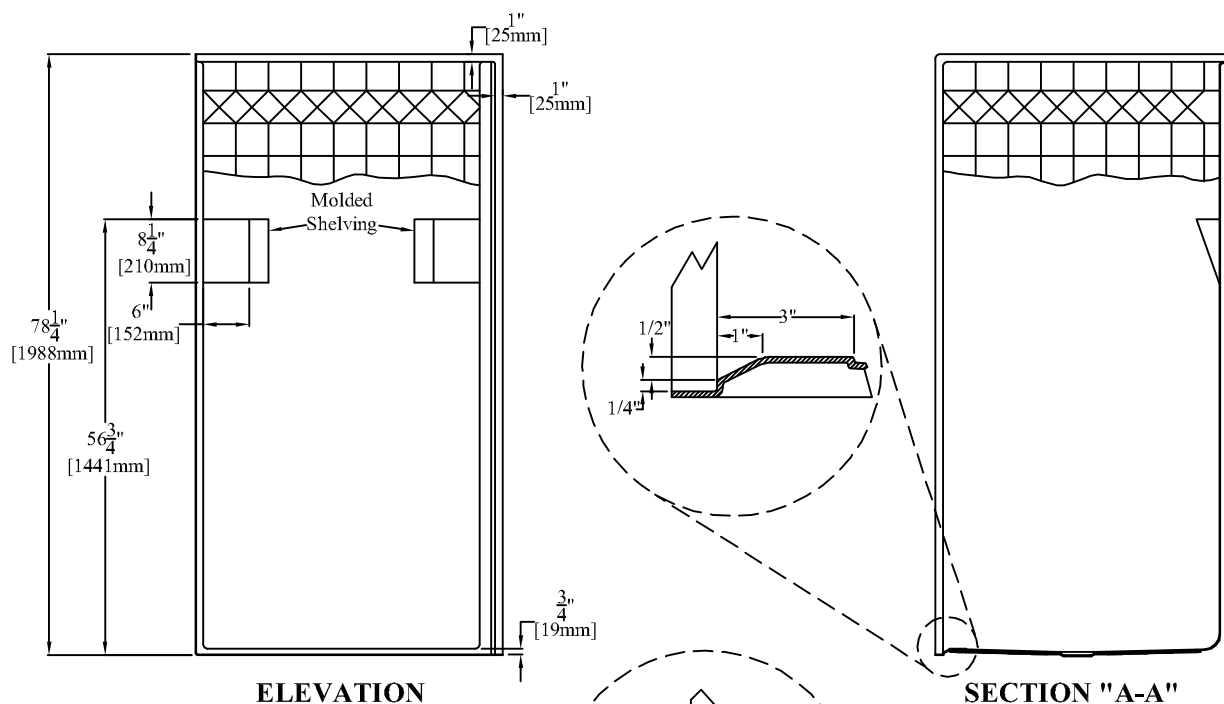
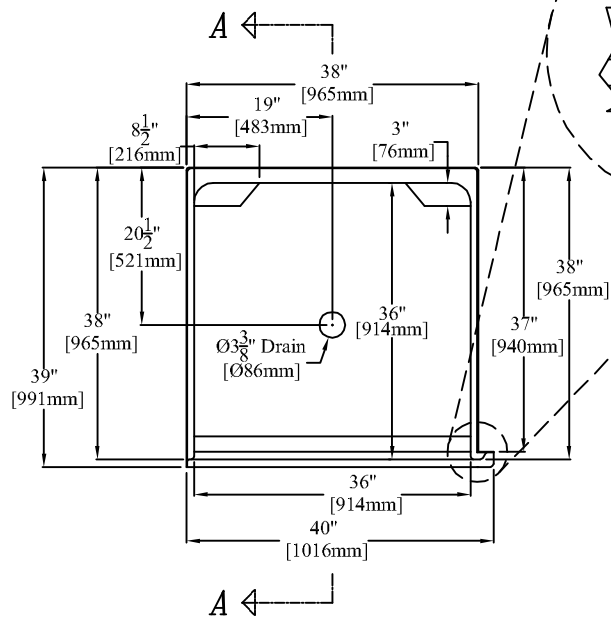


Clarion Bathware



ELEVATION

SECTION "A-A"



PLAN

40" [1016mm] 1-Piece Tiled Barrier-free Shower
With a 3/4" [19mm] Threshold & Reveal Flange

Available with Left or Right Reveal Flange
Right Side Reveal Flange (8842BF34) Shown

PRODUCT SPECIFICATIONS:

- * Special installation instructions for this shower must be followed carefully.
- * Product complies with NAHB, HUD UM-73A, and ANSI-Z124.2.
- * When properly accessorized and installed, this product will meet the requirements of ADAAG and ANSI A117.1.
- * Reinforced & slip resistant floor.
- * Integral 1" [25mm] nailing flange.
- * Integral 1" [25mm] floor nailing flange.
- * Integral reveal flange available on the left (Model #8841BF34) or right (Model #8842BF34) hand side.
- * Molded shelving in corners of shower.
- * Simulated tile walls with ribbon design.
- * Shower Floor: W-36" [914mm]
D-36" [914mm]
- * All dimensions +/- 1/4" [6.4mm]
- * Clarion Bathware reserves the right to change design and/or dimensions.
- * Dimensions are the same for RE, RS, MP, CU and all other versions of this model.

Model 8841BF34 or 8842BF34

Available with Reveal Flange on the Left or Right Side - Right Hand Version 8842BF34 shown

Clarion
BATHWARE
44 Amsler Ave.
Shipperville, PA 16254

Phone: (814) 226-5374
Toll Free: (800) 576-9228
Fax: (814) 226-0730
www.clarionbathware.com

Signatures For Approval:

Customer: _____
Arch./Engr: _____
Contractor: _____
Cla. Engr: _____

Date:

Dwg. Name:
8841BF34or
8842BF34-CUT
Dwg. By: DJC
DATE: 3/11/08