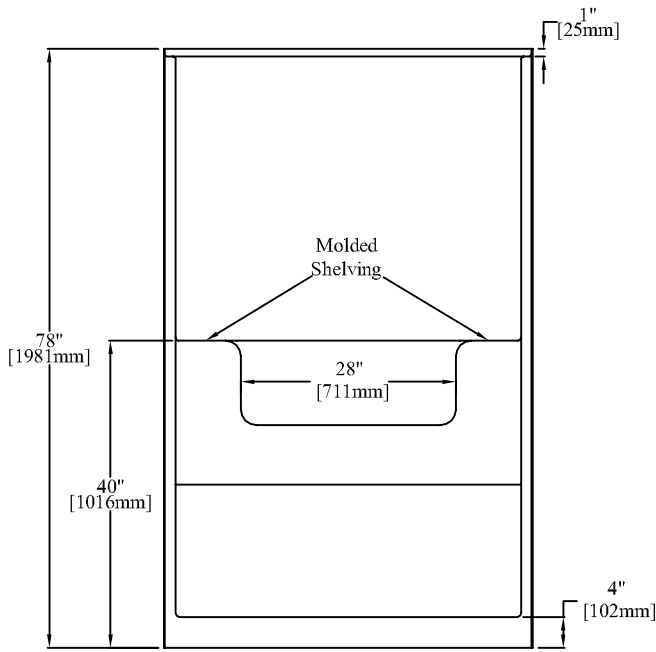
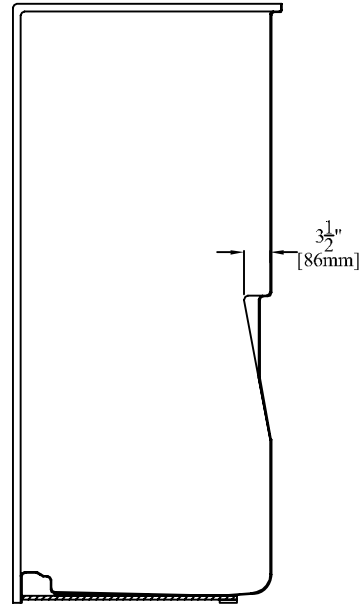


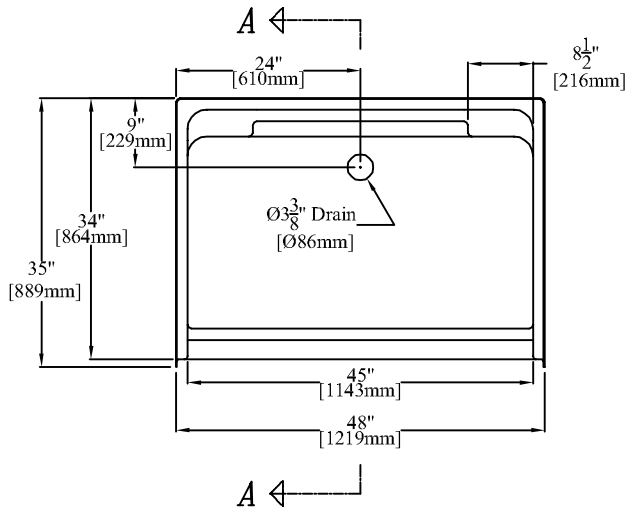
# Clarion Bathware



**ELEVATION**



**SECTION "A-A"**



**PLAN**

48" [1219mm] 1-Piece Shower  
With Molded Shelving

**PRODUCT SPECIFICATIONS:**

- \* Product complies with NAHB, HUD UM-73A, and ANSI-Z124.2.
- \* Wood reinforced & slip resistant floor.
- \* Integral 1" [25mm] nailing flange.
- \* Molded shelving on back wall.
- \* Door Opening: W-45" [1143mm]  
H-72 1/2" [1842mm]
- \* All dimensions +/- 1/4" [6.4mm]
- \* Clarion Bathware reserves the right to change design and/or dimensions.
- \* Dimensions are the same for RE, RS, MP, CU, and all other versions of this product.

## Model 4835SD

**48" [1219mm] Shower with Molded Soap Ledges**

**Clarion**  
BATHWARE  
44 Amsler Ave.  
Shipperville, PA 16254

Phone: (814) 226-5374  
Toll Free: (800) 576-9228  
Fax: (814) 226-0730  
www.clarionbathware.com

Signatures For Approval:

Customer: \_\_\_\_\_  
Arch./Engr: \_\_\_\_\_  
Contractor: \_\_\_\_\_  
Cla. Engr: \_\_\_\_\_

Date:

\_\_\_\_\_  
\_\_\_\_\_  
\_\_\_\_\_  
\_\_\_\_\_

Dwg. Name:  
4835SD-CUT

Dwg. By: DJC  
DATE: 12/21/07